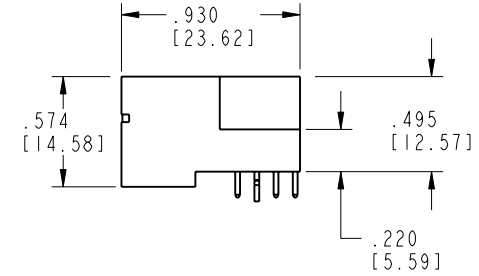
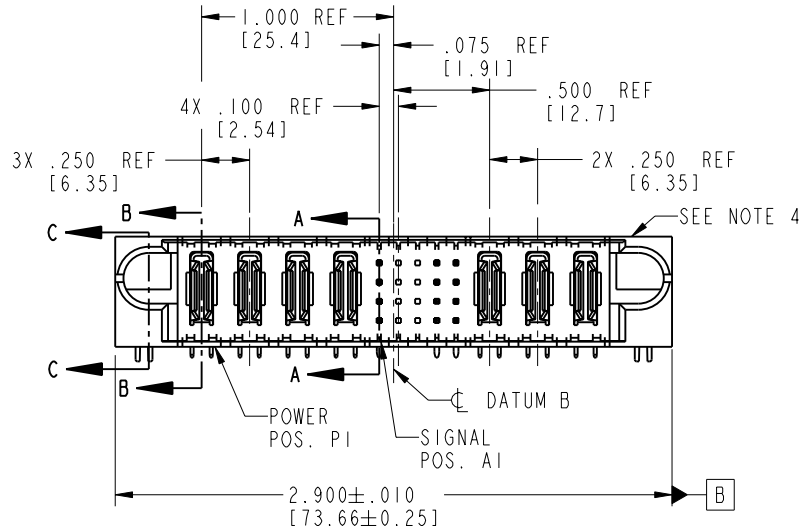


Tous droits strictement réservés. Reproduction ou communication o des liens interdite sous quelque forme que ce soit sans autorisation écrite du propriétaire. Propriete de c FCI. Droits de reproduction FCI.

All rights strictly reserved. Reproduction or issue to third parties in any form whenever is not permitted without written authority from the proprietor. Property of FCI. Copyright FCI.

FCI

PRODUCT NO.	ROWS	POWER				SIGNAL					POWER			E2
		E1	P1	P2	P3	P4	1	2	3	4	5	P5	P6	
51730-028-- NOTE: 3	D C B A	HA	PA	PA	PA	PA	H G F E	X X X X	X X X X	H U G T F S E R	PA	PA	PA	HA



CODE	DIM "M" MATING LENGTH		CONTACT TYPE
PA	N/A	[N/A]	POWER
HA	N/A	[N/A]	HOLD-DOWN
H	.220	[5.59]	SIGNAL
G	.220	[5.59]	SIGNAL
F	.220	[5.59]	SIGNAL
E	.220	[5.59]	SIGNAL
R	.270	[6.86]	SIGNAL
S	.270	[6.86]	SIGNAL
T	.270	[6.86]	SIGNAL
U	.270	[6.86]	SIGNAL
X	OMITTED		OMITTED

mat'l code				SEE NOTE 2		tolerances unless otherwise specified		CUSTOMER		FCI www.fciconnect.com	
ltr	ecn no.	dr	date	linear	.XX±.01/0.X±0.3		COPY		projection	title	
A	V11569	JRW	5/22/01		.XXX±.005/0.XXX±0.13		COPY			4P + 20S + 3P	
B	V12234	JRW	9/17/01		.XXX±.0020/0.XXX±0.051		COPY			RIGHT ANGLE SOLDER HEADER	
C	V20494	JWS	03-13-02	angles	0° ± 2°		INCH/MM		product family		
D	DG05-0389	GuoJM	10/14/05	dr	J. SHAFFER	03-13-02	scale		PwrBlade		
E	DG05-0524	GuoJM	12/05/05	enrg	M. MOSTOLLER	03-13-02	1:1		code		
				chr	M. MOSTOLLER	03-13-02			size		
				appd	M. MOSTOLLER	03-13-02			dwg no		
sheet index				revision sheet	E	E	E	E	A		51730-028
				1	2	3	4			213	
										sheet 1 of 4	

1 | 2

Pro/E

3 |

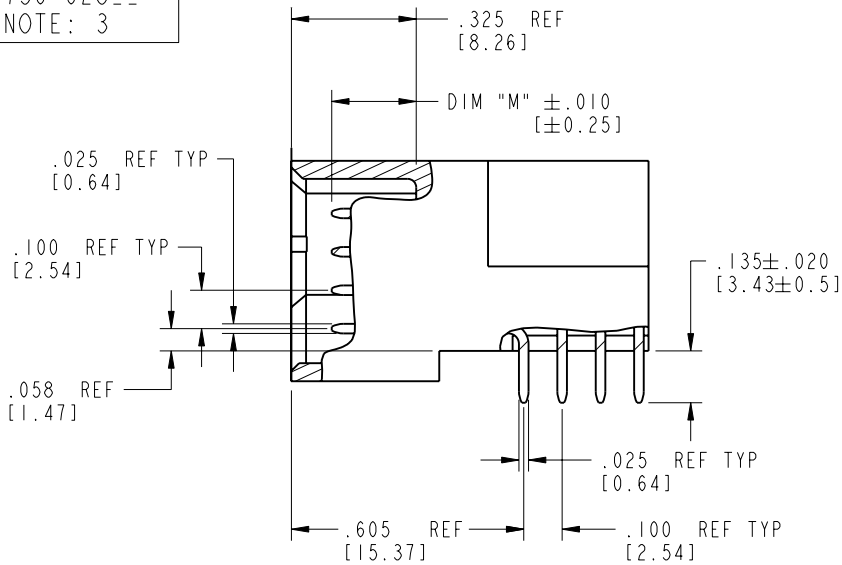
cage code 22526

4

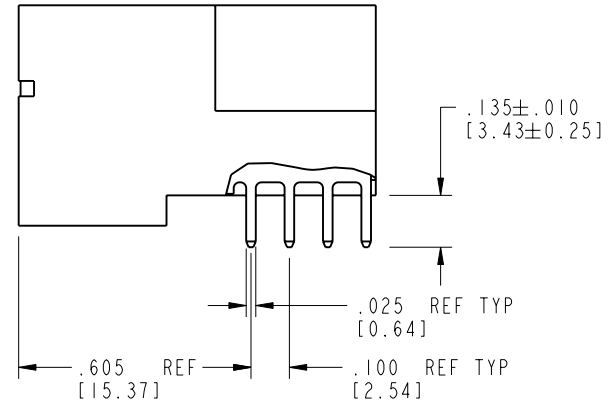
Tous droits strictement réservés. Reproduction ou communication o des liers interdite sous quelque forme que ce soit sans autorisation écrite du propriétaire. Propriete de c FCI. Droits de reproduction FCI.

All rights strictly reserved. Reproduction or issue to third parties in any form, whatever is not permitted without written authority from the proprietor. Property of FCI. Copyright FCI.

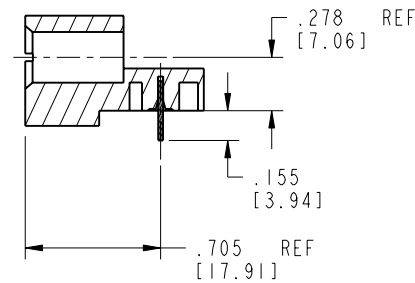
PRODUCT NUMBER
51730-028--
NOTE: 3




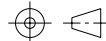
BROKEN-OUT SECTION A-A
SCALE 2:1



BROKEN-OUT SECTION B-B
SCALE 2:1



SECTION C-C

mat'l code		SEE NOTE 2		tolerances unless otherwise specified		CUSTOMER		 FCI www.fciconnect.com			
lfr	ecn no.	dr	date	linear	.XX±.01/0.X±0.3	COPY					
E				linear	.XXX±.005/0.XX±0.13	projection			title	4P + 20S + 3P	
				angles	.XXX±.0020/0.XXX±0.051	INCH/MM			product family	PwrBlade	code
				dr	J. SHAFFER 03-13-02	scale		size	dwg no	sheet	2 of 4
				engr	M. MOSTOLLER 03-13-02	1:1		A	51730-028		
				chr	M. MOSTOLLER 03-13-02						
				appd	M. MOSTOLLER 03-13-02						
sheet index	revision sheet										

cage code 22526

Pro/E

PDM: Rev:E

STATUS: Released

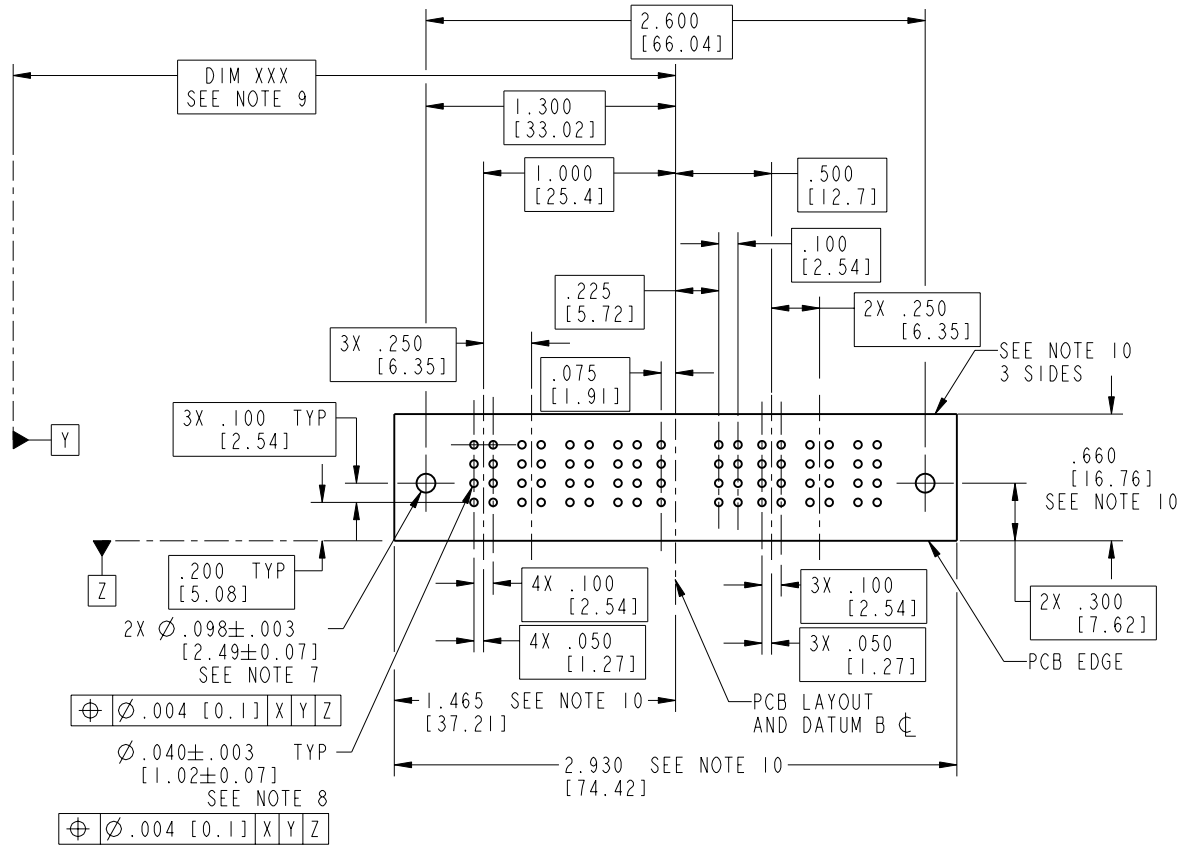
Printed: Aug 12, 2007

Tous droits strictement réservés. Reproduction ou communication o des liers interdite sous quelque forme que ce soit sans autorisation écrite du propriétaire. Propriété de c FCI. Droits de reproduction FCI.



All rights strictly reserved. Reproduction or issue to third parties in any form, whatever is not permitted without written authority from the proprietor. Property of FCI. Copyright FCI.

PRODUCT NUMBER
51730-028--
NOTE: 3



RECOMMENDED PCB LAYOUT

mat'l code		SEE NOTE 2		tolerances unless otherwise specified		CUSTOMER		www.fciconnect.com		
lfr	ecn no.	dr	date	linear	.XX±.01/0.X±0.3	COPY				
E				angles	.XXX±.005/0.XX±0.13 .XXX±.0020/0.XXX±0.051			title 4P + 20S + 3P RIGHT ANGLE SOLDER HEADER		
				dr	J. SHAFFER 03-13-02	INCH/MM		product family PwrBlade code 213		
				enrg	M. MOSTOLLER 03-13-02	scale 1:1		size dwg no 51730-028 sheet 3 of 4		
				chr	M. MOSTOLLER 03-13-02					
				appd	M. MOSTOLLER 03-13-02					
sheet index	revision sheet									

cage code 22526

Pro/E

PDM: Rev:E

STATUS: Released

Printed: Aug 12, 2007

Tous droits strictement réservés. Reproduction ou communication o des liers interdite sous quelque forme que ce soit sans autorisation écrite du propriétaire. Propriete de c FCI. Droits de reproduction FCI.

A **FCI**

All rights strictly reserved. Reproduction or issue to third parties in any form, whenever is not permitted without written authority from the proprietor. Property of FCI. Copyright FCI.

B

PRODUCT NUMBER

51730-028__
NOTE: 3

NOTES:

1. DIMENSIONS AND TOLERANCES ARE IN ACCORDANCE WITH ASME Y14.5M, 1994 UNLESS OTHERWISE SPECIFIED.

CONNECTOR NOTES:

2. HOUSING MATERIAL: UL 94 V-0 GLASS FILLED HIGH-TEMP THERMOPLASTIC
POWER CONTACT MATERIAL: COPPER ALLOY
SIGNAL PIN MATERIAL: COPPER ALLOY

3. PLATING:

51730-028 Singal Pin:30u"/0.76um Au OVER 50u"/1.27um Ni ON THE CONTACT AREA,
AND 100u"/2.54um SnPb PLATING OVER 50u"/1.27um Ni ON THE TERMINATION SECTION.
Power Pin:30u"/0.76um Au OVER 50u"/1.27um Ni ON THE CONTACT AREA,
AND 100u"/2.54um SnPb PLATING OVER 50u"/1.27um Ni ON THE TERMINATION SECTION.

51730-028LF Singal Pin:30u"/0.76um Au OVER 50u"/1.27um Ni ON THE CONTACT AREA,
AND 78u"/2.00um Sn PLATING OVER 50u"/1.27um Ni ON THE TERMINATION SECTION.
Power Pin:30u"/0.76um Au OVER 50u"/1.27um Ni ON THE CONTACT AREA,
AND 78u"/2.00um Sn PLATING OVER 50u"/1.27um Ni ON THE TERMINATION SECTION.

PART NUMBER 51730-028LF MEETS EUROPEAN UNION DIRECTIVE AND OTHER COUNTRY REGULATIONS AS DESCRIBED IN GS-22-008.

THE HOUSING WILL WITHSTAND EXPOSURE TO 260° PEAK TEMPERATURE FOR 10 SECONDS IN A WAVE SOLDER APPLICATION WITH A CIRCUIT BOARD.

4. MANUFACTURER'S NAME, P/N, AND DATE CODE TO APPEAR ON THIS SURFACE.

5. PRODUCT SPECIFICATION GS-12-149.
APPLICATION SPECIFICATION BUS-20-067.

PCB NOTES:

6. ALL HOLE DIAMETERS ARE FINISHED HOLE SIZE.

7. MOUNTING HOLES, WHERE APPLICABLE, ARE UNPLATED.

8. $\varnothing .0453 \pm 0.0010$ [1.151 \pm 0.025] DRILLED HOLES PLATED WITH 0.0003 [0.008] MIN SnPb OVER .001 [0.03] TO .003 [0.08] Cu PLATING TO ACHIEVE $\varnothing .040 \pm .003$ [1.02 \pm .07] HOLE.

9. "DIM XXX" TO BE DETERMINED BY THE CUSTOMER.

10. CONNECTOR KEEP-OUT ZONE.

mat'l code				SEE NOTE 2		tolerances unless otherwise specified		CUSTOMER		A FCI www.fciconnect.com	
ltr	ecr no.	dr	date	linear	.XX±.01/0.X±0.3		COPY		projection	title	
E					.XXX±.005/0.XX±0.13		INCH/MM			4P + 20S + 3P	
				angles	.XXX±.0020/0.XXX±0.051		scale		RIGHT ANGLE SOLDER HEADER		
				dr	J. SHAFFER	03-13-02	1:1		product family		code
				enrg	M. MOSTOLLER	03-13-02			PwrBlade		213
				chr	M. MOSTOLLER	03-13-02			size		sheet
				appd	M. MOSTOLLER	03-13-02			A		4 of 4
sheet index		revision sheet									

A

B

1 | 2

3 |

4

1 | 2

Pro/E

3 |

cage code 22526

4